



ZENEC

EMOTIVE NAVICEIVERS



TOUCH ANOTHER WORLD



The ZENEC Multimedia Experience

ZENEC stands for pure multimedia. ZENEC concentrates, with outstanding success, exclusively on the development of multimedia systems with additional complimentary components and accessories. Competing with other companies with over 20 years of experience in the marketplace, ZENEC was awarded "THE TOP MULTIMEDIA BRAND" by the readers of "autohifi magazine" in 2007, which has placed ZENEC being one of the top two players in the market.

Multimedia on the go should be fun and easy to use. ZENEC's engineers always have the user in mind when they design new products – because only when a multimedia system is easy to install, to use and to update will it meet up to the long term demands of our customers. In 2008 ZENEC will launch the latest ground breaking concept to revolutionize in-car multimedia: "E>GO" – a new "Exchange and Go" concept that just underlines ZENEC's leading position at the very top of the A/V sector once again.

The E>GO range is a radically new generation of mono- and naviceiver units for car specific deployment with not only the original look and feel but also with the easiness from installation to usage, for which ZENEC is known for. ZENEC's aim was to ensure that these units are a direct replacement for the original factory radio/head unit in every respect without any complications.

That E>GO will set new benchmarks for ease of use, straightforward installation and user friendliness has been anticipated by various special publications – and to top it all off, ZENEC's E>GO line has been honored with the highly prestigious 2008–2009 EISA award for "Best Product" in the category "In-Car Integration". EISA (European Imaging and Sound Association) is a group of special interest magazines from 20 European countries.

ZENEC – custom-made for your entertainment.

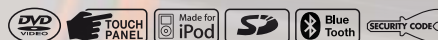
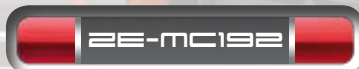




Table of Contents

Moniceivers	04 05
E>GO Navi- and Moniceiver	06 07
Naviceivers	08 09
Roof Mount Monitors	10 11
Universal Monitors	12
Standalone DVD-Player	13
DVB-T Tuners	13
Accessories	14
Specifications	15

A monitor, DVD player and a radio tuner combined in one compact device – moniceivers are versatile control centers of any modern in-car entertainment system. From CDs to MP3 files, to the playback of DVD or WMA encoded files including iPods – moniceivers dominate the entire spectrum of actual A/V and multimedia formats and offer the unbeatable benefit that all functions can be operated by a touch screen.



All entertainment options are available in one single unit. ZENEC have three revolutionary moniceivers in their line up that embody the best in functionality, design, and sound quality: The ZE-MC172, ZE-MC192 and ZE-MC292.

All in One

The feature set of these new models leaves nothing to be desired. All three models deploy 7" wide aspect touch screens. After pressing just one button, the fully motorized display can be extended to offer a brilliant high resolution picture in the renowned premium quality for which ZENEC is already famous.

Due to its electronic anti-shock system the built-in CD/DVD drive plays all the common A/V formats and ensures perfect playback of picture and sound. The full range digital amplifier stage coupled with the high grade RDS tuner and Dolby Digital decoder make these new ZENEC models the basis of a great 5.1 surround system.

Features ZE-MC172/ZE-MC192/ZE-MC292

- Supports CD, CD-R/RW, MP3, WMA, OGG, DVD, DVD±R/ RW, DVD-MP3, MPEG4, DivX 5, VCD, SVCD, JPEG, Picture CD
- Motorized, high-quality 7"/16:9 LCD display with touch screen
- Integrated 4/5 x 50 watts digital amplifier (ZE-MC192/292), 4 x 35 watts (ZE-MC172)
- FM/AM tuner, BSM, RDS
- Integrated Dolby Digital/Pro Logic II decoder
- Integrated iPod interface (iPod control)
- Integrated Bluetooth module (not for ZE-MC172)
- Integrated SD card reader (not for ZE-MC172)
- Theft protection (security code)

Conceivably Simple

The operation of these moniceivers is really straightforward: The touch-sensitive TFT panel allows to control all functions in a very simple and comfortable way. During the development of the new ZENEC units, special attention was paid to a simplification of the in-car use, where the graphical user interface – short GUI – and the ergonomic layout of main functions play a big role. The menu navigation is easy to comprehend at first sight and can always be operated intuitively. All three A/V allrounders come with an integrated iPod interface to allow playback of audio files from any iPod model without the need for any additional adapters. Of course, the iPod in use can be operated directly via the moniceivers' touch panel. Furthermore, both the ZE-MC192 and ZE-MC292 are equipped with a Bluetooth module and can thus communicate with almost any Bluetooth capable mobile phone for hands free phone functionality: The voice of the participant of the call is transmitted via the car's loudspeakers, the driver can talk with the caller on the other end of the line via the built-in microphone at the front of the moniceiver.

Individual Add-Ons

The ZENEC program covers a wide palette of additional multimedia components, which are designed to extend the functionality of this new moniceiver generation. All devices – i.e. external monitors, DVB-T tuner, PND navigation and/or rear view camera – can be directly connected to each ZENEC, without external black boxes or additional adapters. All adjustments and functions can be performed via the touch screen or with the IR remote controls contained in the set content.



Any iPod can be directly connected – without additional adapters – to all ZENEC moni- and naviceivers (only audio playback).



ZE-MC292 for vehicles with 2-DIN mounting slot



CAR&HIFI 4/07
PRICE/PERFORMANCE EXCELLENT

Mobile Navigation System

Many car drivers want a permanently installed navigation system, yet occasionally may also want the extra versatility of a mobile navigation device: The mobile navigation system ZE-NA150 is a flexible dual purpose unit to combine the advantages of a portable navigation unit with the extra comfort of an installed system. The ZE-NA150 can be operated in a car just like every mobile navigation, but will also work as an independent standalone device. When in use with a ZE-MC192/292 moniceiver, the ZE-NA150 is connected to the docking station via the contained cable, to be directly operated by the touch screen of the main unit.

The ZE-NA150 comes with a 3.5"/4:3 touch screen monitor with an on-screen-display featuring a resolution of 320 x 240 pixels. A Full Europe map is preinstalled on a 2 GB SD card. Thanks to a 400 MHz processor (64 MB of SD RAM) the navigation and route recalculations are indeed very fast.

The ZE-NA150 has numerous connection options like a mini-USB 2.0 interface, 3.5 mm stereo socket for the connection of headphones or a separate antenna input socket for an external GPS antenna.



Features ZE-NA150

- Target input with address, postal zip code, P.O.I., longitude and latitude, stored/last found targets
- Driving route indication during guiding to the target (distance/time)
- 2-D/3-D map view with automatic zoom function
- Day and night mode
- Voice guiding in 11 languages, display indication in 12 languages
- SIRF III GPS-receiver
- Rechargeable battery with 3-4 hours operating time
- MP3/WMA/WAV player, playback of WMV, AVI and ASF files, Photo viewer, e-Book viewer
- Scope of delivery: suction disc holder, 12 V cigarette lighter adapter, carry bag, docking station with connection cable to the moniceiver, Mini USB cable



Navigation



Main menu

The mobile navigation system ZE-NA150 can be connected directly to the moniceivers ZE-MC192 and ZE-MC292 and be controlled comfortably via touch screen

N-ZENA150-MUC	N-ZENA150-ACA*	N-ZENA150-GPSA*	N-ZENA150-CLA
suction disc holder, docking-station, connection cable	230 V power supply	external GPS-antenna	12 V cigarette-lighter adapter

* separately available accessories.

E>GO NAVI- AND MONICEIVER

E>GO stands for an innovative generation of moniceivers and naviceivers, which are perfectly adjusted to match the target vehicle – E>GOs can be installed without any special tools or installer knowledge, and this way an upgrade of your car to a full multimedia center becomes an easy task: ingeniously simple, yet with perfect looks.



ZE-NC2000 and ZE-MC2000 E>GO Navi- and Moniceiver for VW cars

If the new multimedia unit will not match to the existing vehicle design and stands out like a foreign object, the disappointment is big. With vehicle-specific mounting frames and adapters, mounting of standard 1-DIN and 2-DIN moni-/naviceivers may become workable, but the cosmetic match with the car's interior design is never going to be fully convincing or decent. Just think about deviating textures and colours – or the button illumination particularly in night mode!

Exchange and Go

ZENEC's response to these questions is called E>GO and stands for a new generation of 2-DIN moni- and naviceivers, which are perfectly adjusted to the original cosmetics of various vehicle types: Pioneers to compliment the original interior of selected vehicles. The first models out of the E>GO line up are the ZE-MC2000 as well as the ZE-NC2000, that offer perfect match of style, look and colours with the interior of the VW GOLF V platform. Starting with the colour of the front panel with a high quality rubber oil coating, over the stylish red/blue day and night illumination up to the elegant design – everything custom-made to fit to the environment, up to the tiniest detail.



Easy Connection

The connection of any E>GO unit to the factory installed steering wheel remote control is absolutely no problem: Simply plug the car specific harness to the connector of your E>GO model, and you are ready to use the full functionality of all the components installed at the factory.

100 % Complete Match

With its 100 percent looks, ZENEC's moni-/naviceivers do harmonize perfectly with any VW GOLF V platform based vehicle – in a way that usually only original devices are able to do. ZE-MC2000/NC2000 can thus fit to a large model base, because the GOLF V platform is large and covers VW Jetta, EOS, Passat, Caddy, Tiguan, Touran or even the new 2008 Scirocco. This platform is extendable, because with a new trim piece both moni-/naviceivers will also fit to the SEAT models Altea, Leon and Toledo.

The general features are more or less identical with the functionality and specs of the ZE-MC292, however the E>GOs are customized to the "target car" to match the front plate of the respective vehicle.

E>GO finally stands for a completely logical overall concept, and is therefore the ultimate concept for the future.

Ingeniously Simple + Easy

ZENEC's new moni-/naviceivers can be integrated without difficult mounting or any additional adapters – directly into the original radio slots of all vehicles compliant with the GOLF V platform (see also separate price list). Just remove the original radio, install your E>GO unit and start enjoying a whole new experience.

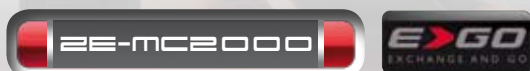
On top of all that, E>GO allows the continued use of factory installed steering wheel remote controls – just connect your E>GO moni-/naviceiver to the vehicle harness, and you are ready to go. Thanks to the integrated Stalk/CAN bus interfaces, the functionality of all components installed by the factory is fully retained.

ZENEC E>GO – ingeniously easy, visually perfect!



They Got the Look

The two custom-made E>GOs are a perfect match for all vehicles that belong to the VW GOLF V platform: As if they have been installed by the factory. Aside from the GOLF V car model, both moni-/naviceivers do also fit directly into VW Jetta, EOS, Passat, Caddy, Tiguan, Touran or the new Scirocco 2008. For the SEAT models Altea, Leon and Toledo only slight modifications are necessary for the E>GO assembly (buy a new adapter).



ZE-NC2000 E>GO – Navigation Integrated

Accurately navigate in West and Eastern Europe with full control of your actions via touch screen – the ZE-NC2000 naviceiver will guide you through 43 countries in a fast and very reliable way. Clear and detailed map views with 3-D objects to orient yourself (screenshots see page 9), combined with precise voice guidance in 24 different languages, and an easily understandable GUI functionality available in 29 languages, enable a unique navigation experience. Thanks to a 400 MHz processor (64 MB SD RAM memory) and the optimized navigation engine of the iGo8 software – the ZE-NC2000 delivers top class performance with unbelievable smooth motion.

The desired target can be found and entered in various ways: by address, postal ZIP code, P.O.I., longitude and latitude and stored/last found targets. The map representation can be adjusted to non-standard driving situations by selecting between various display scales and angles. The zoom function eases the navigation at crossings and at roundabouts, but most of all the 3-D landscape or 3-D city maps (with buildings, objects of interest, city plans) are a feature you will not like to miss once you had the chance to use it.

Features ZE-NC2000 and ZE-MC2000

- Playback of CD, CD-R/RW, MP3, WMA, OGG, DVD±R/RW, DVD-MP3, DVD, MPEG4, DivX 5/6, VCD, SVCD, JPEG, Picture CD
- Motor powered 7"/16:9 (ZE-NC2000), 6.5"/16:9 (ZE-MC2000) LCD touch screen display
- Digital output stage with 4 x 50 watts (5 x 50 watts at ZE-NC2000)
- FM/AM tuner, RDS
- Dolby Digital decoder
- USB port (only at ZE-MC2000)
- iPod direct connection
- Integrated Bluetooth module with free speech function
- SD card reader
- Anti-Theft protection by security code

Full map of Europe



GPS-Navigation

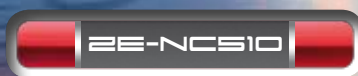
The compact, separately available GPS-navigation with an extensive feature set and optimum control comfort: The ZE-NA2000 (map coverage: 43 countries of Europe) is designed to fit with the ZE-MC2000 unit, and will be controlled by touch screen.

Media-Link



The ZE-MC2000 set contents also features a Media-Link box, which has one USB port, one iPod connection interface, a 3.5 mm socket as well as RCA A/V inputs for video and L+R audio. With the help of this box any additional component can be connected quickly and if necessary, disconnected on the fly again. The Media-Link cable comes with 140 cm, i.e. long enough to allow this box to be placed where it is most convenient.

Naviceivers are perfect control centers combining entertainment tasks with precise navigation, they enable wireless communication via Bluetooth with your cell phone, yet you can playback music from the iPod and even connect other multimedia devices such as a DVB-T tuner or a rear view camera. In spite of the complete feature set, both naviceiver models are simple to operate. All functions can be controlled directly on the touch screen monitor.



ZENEC's new naviceivers ZE-NC510 (1-DIN) and ZE-NC520 (2-DIN) are perfectly prepared for all multimedia/navigation requirements. The two All-In-One devices offer the entire bandwidth of digital entertainment on the way and allow a fast, target-safe navigation in all West and Eastern Europe (FULL Europe on 2 GB SD card included).

Audio and Video Infotainment

Related to the technical configuration of the new ZENEC top naviceiver models, no wishes remain to be fulfilled. The two Jacks of all trades take over the complete palette of infotainment features of the ZE-MC192/292 moniceivers: With its electronic and mechanical anti-shock system the built-in CD/DVD drive plays all common A/V-formats and provides perfect audio and video playback on the road – even on bumpy roads.

Features ZE-NC510/ZE-NC520

- Playback of CD, CD-R/RW, MP3, WMA, DVD±R/RW, DVD-MP3, DVD, MPEG4, DivX 5, VCD, SVCD, JPEG, Picture CD
- Motor powered 7"/16:9 (ZE-NC510), 6.95"/16:9 (ZE-NC520) LCD touch screen display
- Digital output stage with 4 x 50 watts (ZE-NC520: 5 x 50 watts)
- FM/AM tuner, RDS
- Dolby Digital decoder
- iPod direct connection
- Integrated Bluetooth module with free speech function
- SD card reader
- Anti-Theft protection by security code (only ZE-MC520)

Beside the RDS tuner that has been optimized for best radio reception quality and the built-in full range digital amp output stage to drive speakers connected to the units, an SD card reader and Bluetooth based hands free operation of cell phones are further features to be mentioned.

Cinema on Wheels: Surround Sound

The crisp high-resolution wide aspect TFT monitors slide out and offer brilliant, high-contrast pictures in superior ZENEC quality. The ZE-NC510/520 are equipped with Dolby Digital decoders and various additional equalizer functions – i.e. with up to 6 separate sound channels – thus, surround effects which are usually reserved for full fledged Home Cinema systems become possible at the push of a button.

And while the fellow travelers in the backseats enjoy their preferred entertainment program, the driver can always concentrate on the road and listen to the nav voice guidance – thanks to the built-in Dual Zone function.



RDS Radio



DVD



iPod



ZE-NC520 for vehicles with 2-DIN mounting slot



Automatic night/day mode



Route calculation with various criteria



3-D landscape or 3-D city map views with buildings, objects of interest, city maps



P.O.I. selection (Points Of Interest) according to various criteria



Map views in 2-D in varying scales and angles



Automatic Smart zoom function for the enlargement of crossings/bending tracks



Accurate Arrival: Navigation

With the naviceivers ZE-NC510/520 you are always on the correct road – in all 43 European countries. Enter the desired target, select between various options how to reach your target or how to enter the route: Your electronic copilot will guide you through any city or over highways without any detour to whatever place or target you have set, and if required, relevant P.O.I. destinations such as gas stations, hotels, restaurants, parking lots etc., that are on the way. Thanks to the 400 MHz processor with dedicated 64 MB SD RAM, the

hardware optimized iGO8 navigation engine provides fast and stable navigation with seamless rendering of the map views and quickest route calculations.

A clear and detailed map representation – offering various easy adjustable 2-D or 3-D viewing modes and angles – paired with excellent voice guidance in many different languages and a straightforward GUI design in 29 different languages guarantee a precise, unique navigation experience. The automatic zoom function ensures that the driver can really focus on traffic, simply as good as it gets!



DVB-T



Navigation



Bluetooth



A/V-Input



Camera



SD Card



Dual Zone

ROOF MOUNT MONITORS

Entertainment in the rear zone of a vehicle – the passengers on the rear seats can watch a DVD movie or play a videogame via a monitor and a head set, while the driver comfortably navigates through the city or listens to his favorite CD or the radio. ZENEC's high-resolution roof mount monitors provide an excellent cinema like experience: flicker-free, extremely sharp and high-contrast pictures on the road and in each vehicle. All models are also suitable for mounting in mobile homes, caravans or even buses.



10.2"/16:9 Roof Monitor with built-in CD/DVD Drive
221 x 131 mm/800 x 480 pixels

Countless Entertainment Options

ZENEC's ZE-MR1020-DVD is a combination of monitor and integrated DVD player. It is mounted to the roof of the target vehicle and, if necessary, can easily be folded up or downwards. The built-in player is not only compatible with a large number of video formats – DVD/DVD±R/RW/VCD/SVCD –, but can also play audio CDs or MP3 files as well as JPEG pictures. All OSD adjustments can be controlled directly at the roof mount monitor, or else by using the provided IR remote control.



On the front side of the unit you can find a USB port and a SD card reader, on the backside of the unit there is a A/V input which can be used to connect an external source component, a paddle or a video camera.

Cinema on the Road

ZENEC's new overhead monitor comes with a high-resolution 10.2" TFT-LCD active matrix colour display that offers high screen brightness, uniform illumination and a wide contrast range – a feature that plays a big role in bright environments such as daylight viewing. The monitor can be tilt back by 120° to adjust the screen for best possible viewing angle. The monitor itself is unobtrusive and shallow, to allow mounting in any kind of vehicle without getting in the way (when the panel is closed).

Audio signals are transmitted via the integrated infrared transmitter to (separately available) cordless headphones – thus passengers on the rear seats can enjoy their entertainment programs without affecting the concentration of the driver.

Connection Guaranteed

The ZE-MR1020-DVD is equipped with two A/V inputs, allowing the user to connect further external video sources like game consoles or a video camera. Beyond that, this roof mount monitor model is equipped with an A/V output for the connection of an additional monitor. Finally, a USB port and an SD card reader are fitted to the front side of the housing, a highly user-friendly feature allowing the playback of further A/V files, data or pictures that are stored on these wide-spread memory devices. The rear side of the monitor comes with the already mentioned RCA type A/V inputs for the optional connection of external video sources.

Features ZE-MR1020-DVD

- 10.2"/16:9 TFT-LCD active matrix roof monitor with high illumination intensity and built-in CD/DVD drive, SD card reader and USB port
- TFT-LCD panel with picture dimensions 221 x 131 mm and 800 x 480 pixels resolution (384'000 dots)
- Large viewing angle, on the left/on the right > 65°/top > 55°/bottom > 60°
- Compact and flat case with built-in slot-in drive
- Adjustable tilting angle > 120°
- Playback of CD, CD-R/RW, MP3, DVD, DVD R/RW, DVD±R/RW, VCD, SVCD, JPEG and Picture CD
- Regional code 2
- Integrated Dolby Digital decoder
- Electronic (ESP) and mechanical Anti-shock system
- Multi-standards video system with automatic PAL/NTSC switching
- On screen menu for picture and menu adjustments
- Integrated IR transmission module for the control of wireless headphones
- A/V interface for electrical power supply and A/V inputs
- 2 x A/V inputs
- 1 x A/V output
- Automatic interior lights with white twin dome lights (LED)
- IR remote control

With the ZEM-W1501RM and ZE-MR1502 ZENEC has two large 15" roof monitors in the line-up, which offer the convenience to fit with almost all thinkable install situations.

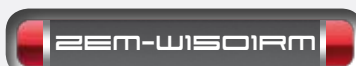


15.4"/16:9 Roof Monitor
330 x 205 mm/1024 x 768 pixels

The ZE-MR1502 comes with a shallow plastic injection type housing of very high quality and is intended for mounting to the roof of various vehicles.

Features ZE-MR1502

- 15.4"/16:9 TFT LCD active matrix display of high brightness
- TFT-LCD panel screen dimensions: 330 x 205 mm, resolution: 1024 x 768 pixels (786'432 dots)
- Generous viewing angles: left/right > 60° / above > 60° / below > 30°
- Compact and shallow housing design for best integration and mountability
- Adjustable opening angle < 150°
- Rubber coated monitor housing for extra wear resistance and durability
- Multi-norm system with NTSC & PAL auto switching
- On-screen menu operation directly at unit or via IR-remote control
- A/V interface for power and A/V inputs
- 2 x RCA A/V inputs, 1 x RCA A/V output
- Integrated IR transmitter for wireless IR headphones
- Automatically switched white LED twin dome lights
- IR-remote control included



15"/16:9 Roof Monitor
336 x 210 mm/720 x 576 pixels

ZEM-W1501RM has a metal frame housing with gas pressure shock absorbers. The mounting plate for the installation is located behind the display, so that this particular roof mount model is also suitable for wall mounting – e.g. in motor homes, caravans or buses.

Features ZEM-W1501RM

- 15"/16:9 TFT LCD active matrix display of high brightness
- TFT-LCD panel, screen dimension: 336 x 210 mm, resolution: 720 x 576 pixels (414'720 dots)
- Generous viewing angles: left/right > 60° / above > 60° / below > 30°
- Compact and shallow housing design for best integration and mountability
- Multi-norm system with NTSC & PAL auto switching
- On-screen menu operation directly on unit or via IR-remote control
- 2 x RCA A/V inputs
- IR-remote control included



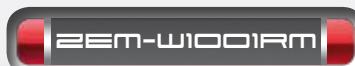
All ZENEC roof monitors allow on-screen menu operation directly at the device or with the included infrared remote control.



8"/16:9 Roof Monitor
176 x 99 mm/1440 x 234 pixels

Features ZEM-W801RM, ZEM-W1001RM

- 8"-10.2"/16:9 TFT LCD active matrix display of high brightness
- Generous viewing angles: left/right > 60° / above > 30° / below > 60°
- Plastic injection housing with scratch-resistant rubberized surface
- Low-profile housing design for best integration and mountability
- Adjustable opening angle < 150°
- Automatic PAL/NTSC switching (not for ZEM-W801RM)
- On-screen menu operation directly on unit or via IR-remote control
- 2 x RCA A/V inputs, 1 x RCA A/V output
- A/V interface for power supply and A/V inputs
- Automatic interior lighting
- Integrated IR transmitter for wireless IR headphones
- IR-remote control included



10.2"/16:9 Roof Monitor
220 x 133 mm/800 x 480 pixels

UNIVERSAL MONITORS

ZENEC's universal monitors are an ideal extension for any modern multimedia system. The compact housings allow universal use and mounting in constrained or tight spaces or headrests, but still persuade the audience with brilliant and punchy picture quality – and that's what ZENEC is all about: realistic movie-like picture quality with well balanced colours and sharp, high-contrast images – standing out even in bright daylight conditions.

ZENEC's universal monitors are intended for use with all moni- or naviceivers, DVD players or DVB-T tuners, which are equipped with an RCA A/V output. All three universal monitor models are compatible with the standard video signal formats PAL/NTSC and feature an auto-sensing circuitry to recognize and switch the video input signal processing accordingly.



auto HiFi RANKING
Issue 03/08
Advanced Class
Price/performance ★★★★★
33 Points



7"/16:9 · 154 x 87 mm/1440 x 234 pixels

The black rubberized housing texture of the ZEM-W702UIR prevents damage or wear caused by daily use, such as scratches and fingerprints. The special feature is the integrated IR transmitter to drive wireless headphones / head sets.



7"/16:9 · 154 x 87 mm/1440 x 234 pixels



6.2"/16:9 · 137.5 x 77.2 mm/1440 x 234 pixels

Active Matrix Universal Monitor ZE-MU620IR

Many newer European and Japanese vehicles meanwhile deploy very compact headrests, where mounting a usual 7" universal monitor becomes problematic. For such cases, the ZE-MU620IR has been developed: with its 6.2"/16:9 wide picture LCD display ZENEC's universal monitor will fit into the smallest headrest and is only barely losing picture real estate compared to standard 7" models. The ZE-MU620IR features two A/V inputs and an integrated 2-CH IR transmitter for the control of wireless IR headphones.



The compact and shallow housing designs of the ZENEC universal monitors are tailor made for trouble-free installation in Asian and European type vehicles. Suitable mounting frames are included in the set content.

Features of the Universal Monitors

- High resolution TFT-LCD A-grade active matrix display
- Large viewing angle: on the left/on the right > 60°/top > 30°/bottom > 60°
- On-screen menu navigation directly at the equipment and by IR remote control
- Automatic PAL/NTSC switchover
- ZE-MU703: 2 x A/V inputs (1 x RCA, 1 x 3.5 mm socket at the front), 1 x headphone output (3.5 mm socket the front)
- ZEM-W702UIR and ZE-MU620IR: 2 x RCA A/V inputs
- Integrated IR transmission module for activation of wireless headphones (not at ZE-MU703)
- A/V interface with quick disconnect connection for electrical power supply and A/V input
- Extensive mounting material, inclusive ball joint swiveling support (not at ZE-MU620IR and ZE-MU703) and special installation frame for headrest mounting
- IR remote control (not at ZE-MU703)

STANDALONE DVD-PLAYER



Playing CDs or MP3 files, watch a DVD movie – the shockproof multi standard disc drive of ZENEC's ZE-DV90 standalone player does cope with all standard A/V formats. The player – in compact ½ DIN format – can be mounted in the tiniest spaces, for an easy upgrade of OE factory installed systems that shall be upgraded to allow DVD playback. The set content also covers an IR remote control as well as the matching IR receiver eye with extension wire, in order to enable installation in virtually any place inside the vehicle.

DVB-T TUNERS

Watch TV news or enjoy actual video clips on MTV or VIVA: With the two DVB-T tuner models in the ZENEC line-up the interesting world of digital television can now be enjoyed in every vehicle.

The two DVB-T TV-boxes ZE-DVBT25 and ZE-DVBT10 can be connected to any moniceiver, naviceiver or roof/universal monitor, featuring an RCA A/V output – to be comfortably controlled with the IR remote control.

The ZE-DVBT25, a compact 2-CH Diversity DVB-T tuner, can top all this: It is perfectly suited for the direct connection to all ZENEC navi- and moniceiver models and allows direct touch screen control over the main unit (except for the ZE-MC172).



ZE-DVBT25

2-CH Diversity DVB-T Tuner

Features ZE-DVBT25

- 2-CH DVB-T tuner with antenna diversity
- Touch screen compatible with all ZENEC moni- and naviceivers (except ZE-MC172)
- PAL/NTSC compatible
- Multi-lingual OSD-menu
- Electronic program guide (EPG)
- Manual and automatic channel scan
- 500 editable preset stations
- 1 x RCA A/V output
- 2 x digital TV antennas with built-in amplifier included
- Separate IR remote sensor with extension cord included
- IR remote control included

ZE-DV90

1/2-DIN DVD Player

Features ZE-DV90

- Compact standalone DVD player, in ½ DIN format
- Slot-in DVD mechanism
- Capability to read: DVD/DVD±R/DVD±RW/CD-R/CD-RW/MP3/VCD/SVCD
- NTSC and PAL compatible
- Built-in SD card reader
- Built-in mini-USB port
- Built-in Dolby Digital decoder
- White keypad illumination
- 3 x RCA A/V outputs
- Optical digital output
- Separate IR-remote sensor with extension cord included
- IR remote control included



ZE-DVBT10

1-CH DVB-T Tuner

Features ZE-DVBT10

- 1-CH DVB-T tuner
- PAL/NTSC compatible
- Multi-lingual OSD-menu
- Manual or automatic channel scan
- Videotext
- 1 x RCA A/V output
- Antenna input with 5 V output power for active antennas
- IR receiver eye with extension cord included
- IR remote control included

ZE-TV-DVBA1

Active DVB-T
Gluing Antenna



DVB-T active antenna, operated with a 5V phantom power supply, can be combined with all DVB-T tuners, which offer this voltage at the antenna jack. The antenna is very compact and can be mounted in convenient places inside the vehicle.

Features ZE-TV-DVBA1

- 5 V phantom power supply via external DVB-T tuner
- Reception frequency range VHF-H 170 – 230 MHz / UHF 470 – 860 MHz
- Current consumption 5 V supply -35 mA MAX.
- Operation temperature range -30° C ~ +80° C
- Gain (@ 5 V) 20 dB
- Length of coaxial cable 4.2 m





ZE-AVS

Audio/Video Switcher

To wire and control a complex multimedia system with several video sources and different monitors? No problem for the A/V switching unit ZE-AVS. This versatile product has inputs to connect four A/V sources and four outputs to drive monitors/displays. The source components and the connected displays can be controlled by the IR remote control contained in this set.

With the ZE-AVS it is possible to select and route four different A/V signals, assigning each signal to the connected monitor of your own choice. Furthermore, the ZE-AVS has four additional 12 V DC outputs for a totally stable electrical power supply of the monitors to be connected and operated. Also contained in this set: an IR receiver eye with extension wire for hidden mounting of the A/V switcher. The ZE-AVS is compatible with PAL/NTSC and can be combined with any source component that features a composite A/V output.

General Configuration Characteristics of the ZE-AVS

- 4 x RCA A/V inputs
- 4 x RCA A/V outputs
- 4 x 12 V DC outputs
- Compatible with PAL/NTSC
- IR receiver with extension cord and IR remote control included

Rear View Cameras

Three compact rear view cameras extend the ZENEC multimedia program and offer variable installation options, depending on vehicle model and quality requirements. All three cameras are fully weather- and splash-proof, and thus not only suitable for the mounting in normal cars but also for motor homes, caravans, buses, etc.

The small, almost invisible cameras guarantee a perfect back view with their light sensitive CMOS picture sensors – to get a good idea about all the obstacles behind the vehicle. All the models feature mirror-image picture output and are compatible with the PAL standard. On the connectivity side they come with one RCA video output and thus allow to be connected to either ZENEC moniceivers, naviceivers or/and universal and roof mount monitors, or any other video playback device that deploys an RCA composite video input.

Thanks to the flexible mounting mechanism of the MT camera models (MT = Mounting type) they are applicable for almost any kind of mounting scenario, or for those instances where an integrated mounting is neither possible nor intended. For the installation of the "MT" type models, only two small pilot mounting holes must be drilled into the bumper of the car.



ZE-RVC40MT

The 1/4" CMOS colour camera is a rear view camera with integrated universal mounting bracket.

auto	USER RANKING
Issue 01/08	Recommendable
Price/performance	★★★★☆



ZE-RVC30MT

The 1/4" CMOS colour camera is a rear view camera with integrated universal mounting bracket.

auto	USER RANKING
Issue 01/08	Recommendable
Price/performance	★★★★☆

Technical Data	ZE-RVC20DT	ZE-RVC30MT	ZE-RVC40MT
Luminous sensitivity	0,02 Lux	1 Lux	0,5 Lux
Horizontal field of view	100°	120°	120°
Resolution	365.496 pixels	333.000 pixels	290.000 pixels



ZE-RVC20DT

ZENEC's ZE-RVC20DT is a 1/3" rear camera (DT = DrillType) for installation in the bumper – and requires a hole to be cut. Thanks to the additional illumination by the IR LEDs, this colour camera model handles bad lighting conditions especially well.

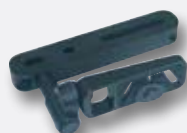
auto	USER RANKING
Issue 01/08	Recommendable
Price/performance	★★★★★



ZE-HP3

Infrared Headphone

With infrared headphones the passengers can enjoy their multimedia pleasure without affecting the concentration of the driver. The wireless IR headphone ZE-HP3 is powered by batteries and is receiving audio signals via the built-in infrared sensor. The playback volume can be adjusted directly at the headphone with a rotary knob.



ZEM-MM2

Mounting Adapter

The ZEM-MM2 is a mounting adapter made of impact resistant PP injection material for easy "no cutting required" installation of 5.6", 6.5" or 7" TFT universal monitors into the headrests of front seats. The adapter can be adjusted for monitor height and depth, to find a suitable position for most vehicles and installation options.



ZE-M-IP

Docking Station

Expandability for all moni- and naviceiver models of the ZENEC range (except ZE-MC2000): With the docking station ZE-M-IP the A/V inputs are "shifted" to an easily accessible location – the connection box can receive signals from an iPod, an AUX source and even a 3.5 mm socket (of a portable player) to link with the multimedia device. The cable is long enough to accommodate the ZE-M-IP in a convenient place within the reach of the driver.

SPECIFICATIONS

	ZE-MC172	ZE-MC192	ZE-MC292	ZE-MC2000	ZE-NC2000	ZE-NC510	ZE-NC520
TFT PANEL							
Display	7"/16:9	7"/16:9	7"/16:9	6.5"/16:9	7"/16:9	7"/16:9	6.95"/16:9
Resolution	1440 x 234	1440 x 234	1440 x 234	1200 x 234	1440 x 234	1440 x 234	1440 x 234
Pixels	336.960	336.960	336.960	280.800	336.960	336.960	336.960
Touch panel	•	•	•	•	•	•	•
TUNER							
Receiver	FM/AM	FM/AM	FM/AM	FM/AM	FM/AM	FM/AM	FM/AM
Station memory	18 FM/12 AM	18 FM/12 AM	18 FM/12 AM	18 FM/12 AM	18 FM/12 AM	18 FM/12 AM	18 FM/12 AM
RDS	•	•	•	•	•	•	•
Auto Store	•	•	•	•	•	•	•
MEDIA							
CD/CD-R/CD-RW	•/•/•	•/•/•	•/•/•	•/•/•	•/•/•	•/•/•	•/•/•
MP3/WMA	•/•	•/•	•/•	•/•	•/•	•/•	•/•
DVD	•	•	•	•	•	•	•
DVD-R-RW/DVD+R-RW	•/•	•/•	•/•	•/•	•/•	•/•	•/•
DVD-MP3	•	•	•	•	•	•	•
VCD/SVCD	•/•	•/•	•/•	•/•	•/•	•	•
DivX5/DivX6	•/	•/	•/	•/•	•/•	•/•	•/•
Picture CD/JPEG	•/•	•/•	•/•	•/•	•/•	•/•	•/•
Regional Code 2	•	•	•	•	•	•	•
AUDIO							
Max. power output	4 x 35 W	4 x 50 W	5 x 50 W	4 x 50 W	5 x 50 W	4 x 50 W	5 x 50 W
Dolby Digital/Pro Logic II	•/•	•/•	•/•	•	•	•	•
Equalizer	•	•	•	•	•	•	•
Subwoofer-level control	•	•	•	•	•	•	•
Integrated low-pass filter		•	•	•	•	•	•
Subwoofer phase		•	•		•	•	•
A/V-CONNECTIONS							
Preamplifier outputs	4.1	5.1	5.1	5.1	5.1	5.1	5.1
Audio dual zone		•	•	•	•	•	•
Video output (NTSC)	2	2	2	2	2	2	2
Video input	1	1	1	1	2	1	1
Video input (camera)	1	1	1	1	1	1	1
Aux-In (RCA)	1	1	1	1	1	1	1
Front Aux-In (3.5 mm)				1 (+ Video)		1 (+ Video)	
GENERAL							
iPod direct connection	•	•	•	•	•	•	•
Bluetooth		•	•	•	•	•	•
USB				•			
SD card reader		•	•	•	•	•	•
Integrated Navi (iGO8)					•	•	•
Dual zone		•	•	•	•	•	•
Anti-Theft Protection (code)	•	•	•	•	•		•
Connection steering-wheel RC	• (optional adapter)	• (optional adapter)	• (optional adapter)	•	•	• (optional adapter)	• (optional adapter)
EXTENSION							
ZE-DVBT25		•	•		•	•	•
ZE-NA150 (Horizon)		•	•				
ZE-NA2000 (iGO8)				•			
OTHER							
Incl. BT Micro internal/external		•/	•/	•/•	•/	•/	•/
Incl. remote control front	•	•	•	•	•	•	•
Incl. remote control rear		•	•	•	•	•	•
Incl. Smart Dial controller		•	•		•	•	•
Key illumination	White	White	White	Red/Blue (VW)	Red/Blue (VW)	White	White



WWW.ZENEC.COM

Changes of the models and specifications reserved.



ACR AG
Bohrturmweg 1
CH-5330 Bad Zurzach
Switzerland
Phone +41 56 269 64 64
Fax +41 56 269 64 65
www.acr.eu